

Facts

Name	Don Ton
Type of facility	Secondary School
No. of students	205 (92 boys, 113 girls)
No. of teachers	18 (9 male, 9 female)
Number of Classrooms	6
Size of building	336 m ²
Budget	USD 46,920
Construction period	Oct 2012 – April 2013
Project manager	Supattra Matakoon
Location (Province)	Northern Laos Xaignabouli Province

Description

Don Ton Secondary School (map: red dot) is located in Xaignabouli province in northern Laos. Originally founded as a primary school in 1965, the school was later changed to become a secondary school in 1982. Since then, Don Ton Secondary School has been providing secondary education, which ranges from grade 6 to 9. Currently, a total of 18 teachers are responsible for the education of 205 students (113 girls, 92 boys). The students come from five surrounding villages and from diverse ethnic minority groups (i.e. Yuan, Lue, Khmu, Hmong and Lao Lum). The communities are mostly dependent on their agricultural produce for subsistence. Understanding the importance of education for their children, the communities were actively contributing wood and their labour to maintain their existing school building with eight classrooms.

Primarily built out of wood, it is inevitable that the building materials cannot withstand the weathering of time and harsh climatic changes. Termite-infested and rotting from the wet tropical climate, the school building is far from safe. Once the entire roof of the school was blown away by strong winds. In spite of their will, the communities are limited by their resources to improve the learning condition of their students.

Map



Implementation

We will support Don Ton Secondary School and their communities by constructing one new building with six classrooms. Additionally we will build 4 toilet blocks. The classrooms will also be equipped with furniture.

Wood frames and wood for the roofing will be contributed by the communities. They will also provide labour to fill in soil for each room. They will also contribute water and electricity for the construction. The government will continue to support the teachers' salaries and learning materials. A professional construction team in the village will be hired for the actual construction work. All required construction materials can be sourced from local material shops and transported to the construction site.

We consider this to be a low risk project. The village can be accessed easily by car. Fluctuating prices for construction materials might affect the overall budget. Although the project is scheduled to be implemented after the rainy season, the unpredictability of the weather may impact the transportation of materials and the construction process. We target to complete the construction by April 2013.

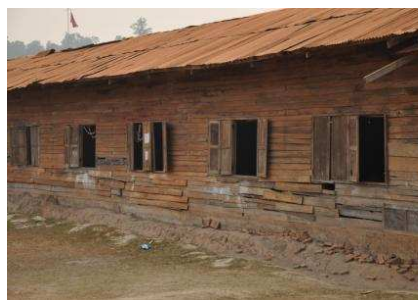
Photos



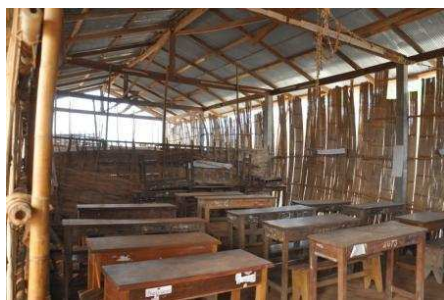
Welcome to Don Ton Secondary School

Budget

Item	THB	USD	In %
Construction material	913,309	28,811	61%
Labour	200,000	6,309	13%
Interior / Furniture	170,800	5,388	12%
Transportation	30,000	946	2%
Project Monitoring and Implementation	69,164	2,182	5%
Administrative Overhead	104,117	3,284	7%
Total Budget	1,487,390	46,920	100%



The damaged, rotten building from outside



Inside the classrooms or what is left of the classroom

Project manager

Supattra Matakoon
Nickname: Koy
Koy has been working for Child's Dream since May 2008 and is in charge of projects in Laos.



koy@childsdream.org

Mobile: +66 (0)81 784 2821

More photos of Don Ton Lower Secondary School!



Welcome to Don Ton Lower Secondary School



Classroom with enthusiastic students. The dirt floor is a problem when it rains



Last community meeting and signing the contract



Classroom without students



Classroom with students



outside view of the classrooms



The leaking roof



Damaged building from the outside



From the inside



an English lesson takes place



Students waiting outside the classrooms



Thank you for your support! ☺