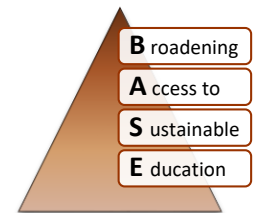




# Sre Andong High School – School Building



## Facts

Name	Sre Andong High School
Type of facility	School Building
Number of students	239 (124 boys and 115 girls)
Number of teachers	12 (8 men and 4 women)
Number of classrooms to be built by us	1 school building with 5 fully furnished classrooms and 3 toilets
Size of building	360 m <sup>2</sup>
Budget	<b>USD 60,415</b>
Construction period	October 2019 – April 2020
Project manager	Mr. Sinoeuy My
Location	Boeng Run Village Samlout Commune Samlout District Battambang Province Cambodia

## Description

The Sre Andong High School is located in Boeng Run Village, Samlout Commune, Samlout District, Battambang Province, Cambodia. Samlout commune is located about 85 km from Battambang City, the capital city of Battambang Province. Founded in 1979, the commune has a population of 8,454 residents and is home to 1,927 households. The vast majority of the population is dependent on subsistence agriculture and plantation work for their living; some migrated to Thailand to work as migrant workers to fill in farm and construction jobs. The Sre Andong High School opened in 2007 and currently has 3 school buildings with a total of 9 classrooms, 1 boarding house for teachers, and 8 toilets. The 3 concrete buildings are in robust condition and can last for some more years. Currently, the school serves 239 students (124 boys and 115 girls) ranging from 12-18 years old and employs 12 teachers (8 men and 4 women). The student population has been continuously increasing over the last few years and classrooms have become increasingly crowded; creating an unproductive and chaotic learning environment for the students. Under these circumstances, the students cannot focus on their studies and easily get distracted in this unsuitable learning environment. In addition, 2 more high school levels (upper secondary 2 and 3) will be added next year, in order for students to fully complete their 3 years of high school level education. Therefore, a new and standardised school building with furniture is urgently needed. The new school building will emphasize the importance of education to Boeng Run Village and other surrounding communities and provide an incentive for the students to continue and complete high school level education. After implementation, the school will have a capacity of over 350 students. We will also build 3 additional new toilets to help improve the sanitation standards at the school and prevent hygiene-related illnesses, hence reducing dropout rates.

## Map



## Implementation

Sre Andong High School is a government registered school. The teachers' salaries and training is supported and managed by the government. Our approach is to always involve the community into the project to encourage ownership and community development. For this project the villagers have agreed to contribute by overseeing and monitoring the progress of the construction to ensure our high quality standards are being met, by providing manual labour, by filling the school foundation, and by organising the opening ceremony. The school and the community will be responsible for the operations and maintenance of the new school facility. We will select a trusted local contractor to coordinate all phases of construction and to purchase materials locally. The foreman will be in charge for selecting the construction team and will be responsible for covering all labour costs and construction materials. The contractor will be paid in four instalments based on the construction progress, with 5% of the total cost held back for 6 months as a guarantee for the quality of the work. The school location is close to the main road and accessible all year round. Construction will begin in October 2019 and is targeted to be completed in April 2020. We consider this a low risk project.

## Photos



Welcome to Sre Andong High School.

## Budget

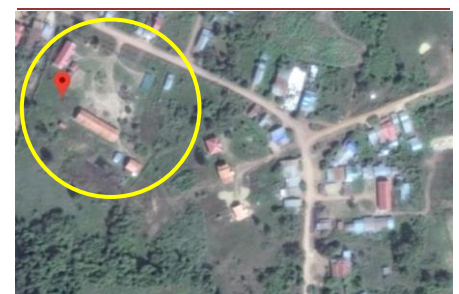
Item	USD	In %
Construction Materials	37,906	63
Interior Equipment & Furniture	3,196	5
Labour Costs	12,441	20
Transportation & Equipment Rental	957	2
Implementation & Monitoring Cost	1,686	3
Administration Overhead	4,229	7
<b>Total Budget</b>	<b>60,415</b>	<b>100</b>



High school students attending class inside one of the classrooms.



Our field team meeting with school officials and community to discuss the construction project.



Aerial view of the Sre Andong High School campus (encircled in yellow).