

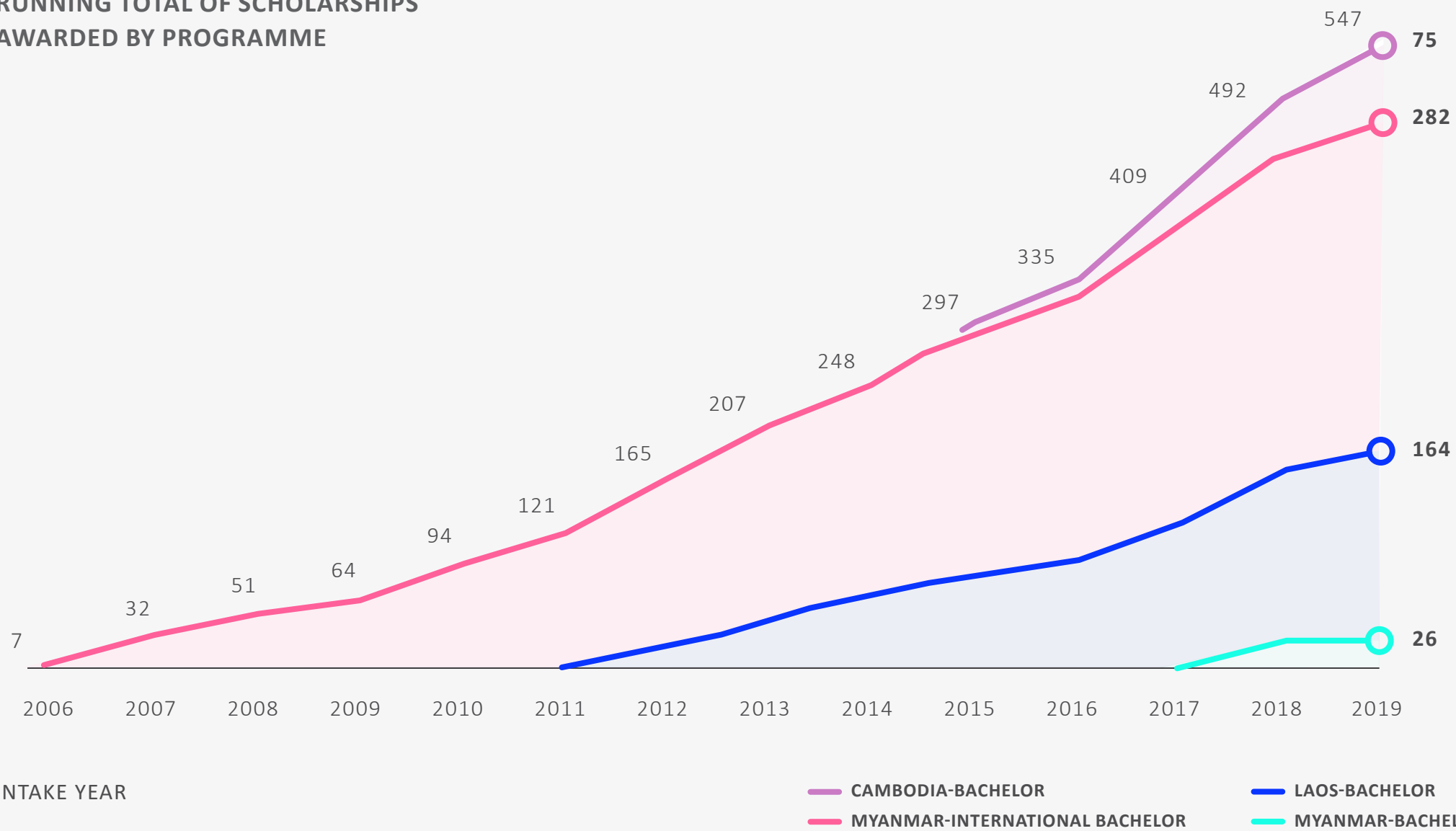
EDUCATION FOR SUSTAINABLE DEVELOPMENT

Child's Dream believes that a country can only develop in a sustainable and peaceful way if all members of society can access quality education, fulfil their aspirations and potential, apply their knowledge, and contribute towards the development of their communities. Our University Scholarship Programme provides scholarship support for academically strong students to attend tertiary education in Laos, Cambodia, Myanmar and Thailand. With the advantage of higher education, youth have improved skills and knowledge, access to better employment and serve as future contributors and leaders to the development of their communities.



UNIVERSITY
SCHOLARSHIP
PROGRAMME

RUNNING TOTAL OF SCHOLARSHIPS AWARDED BY PROGRAMME



EVALUATION METHODOLOGY

In order to understand programme outcomes, a 2019 online survey was administered via Google Forms to 217 alumni and the findings presented reflect the self-reported survey responses of 156 alumni. Alumni who graduated in 2019 were not invited to participate in the survey to ensure that the results only reflect the situation of those who graduated at least one year before. To reduce bias, duplicate respondents were removed from the dataset and all remaining answers were cross-checked for consistency as existing language barriers might decrease response accuracy.



547

BENEFICIARIES

2006-2019

50%
FEMALE

50%
MALE

A GROWING NUMBER OF BENEFICIARIES

Since 2007, the USP has seen a steady growth, reaching a total of 547 beneficiaries in 2019. The programme is gender balanced.



BENEFICIARIES STATUS | CUMULATIVE BY PROGRAMME

2006-2019 | Total % | n=547

84%

COMPLETION RATE

POSITIVE GRADUATION RATES

Overall, the programme has recorded a graduation rate of 84%.

547
RECEIVED SCHOLARSHIP

232
CURRENTLY STUDYING

30
DISCONTINUED

23
DROPPED OUT

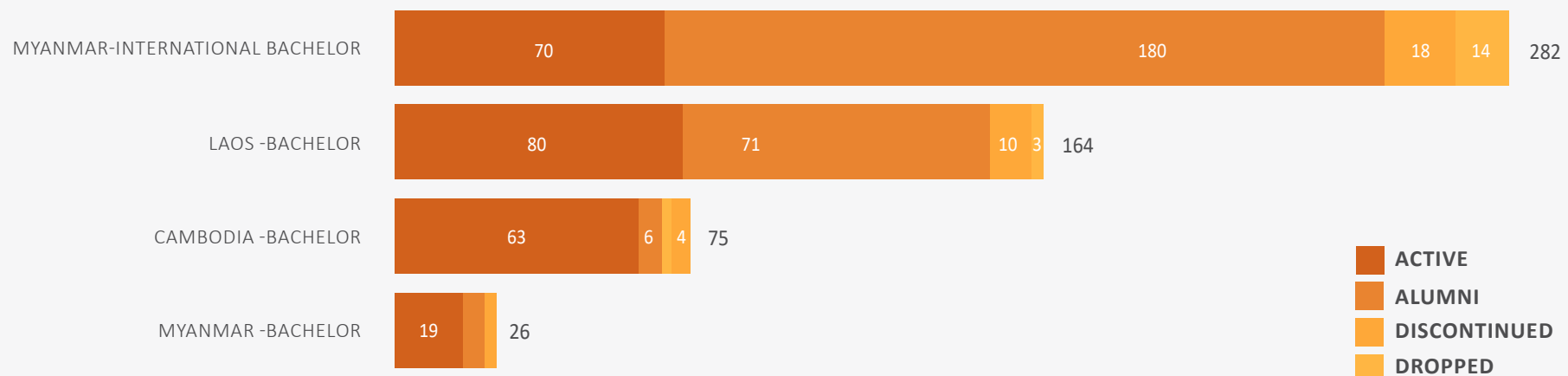
262

GRADUATED

The USP International Myanmar Bachelor currently holds the highest number of alumni (180) and the USPLB counts the highest number of active students (80).

BENEFICIARIES STATUS | CUMULATIVE BY PROGRAMME

2006-2019 | Total % | n=547



ACTIVE
ALUMNI
DISCONTINUED
DROPPED

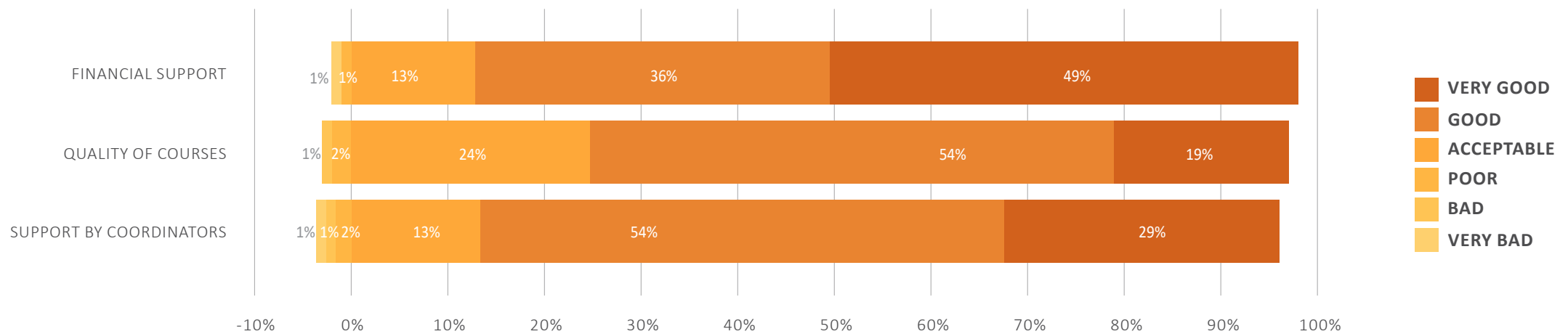


FINANCIAL SUPPORT IS THE MOST VALUED BENEFIT

Respondents rated Child's Dream's support in three categories. Overall the alumni seem satisfied with Child's Dream's support, with only a handful negatively rating its support. Financial support is considered the most valuable benefit provided by Child's Dream.

RESPONDENTS' RATING OF CHILD'S DREAM'S SUPPORT

Total % | n=156



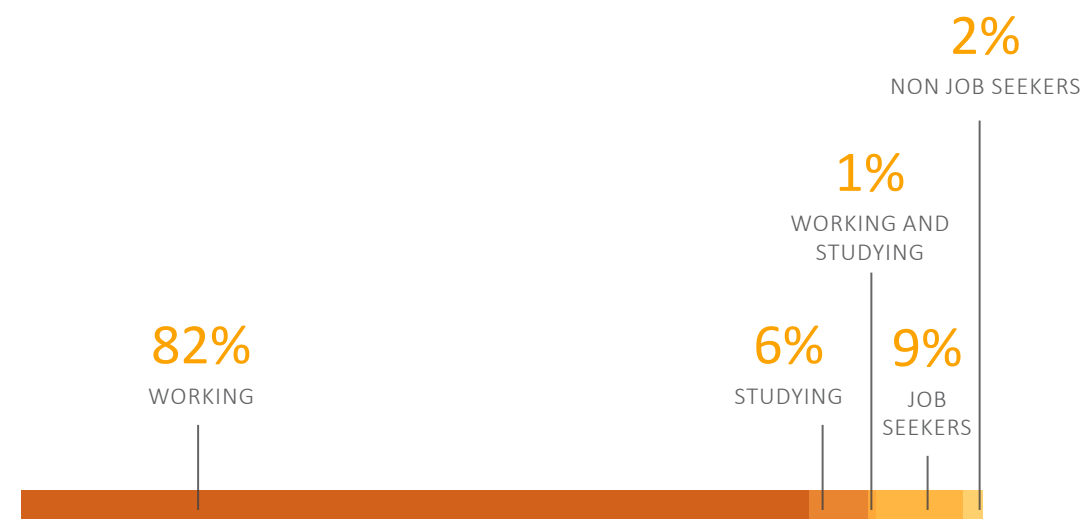
ALUMNI TRACKING SURVEY

72%
RESPONSE RATE
 OF 217 ALUMNI SURVEYED
 IN 2019

For outcome analysis, a survey was sent to 217 beneficiaries who graduated between 2009 and 2018. We received 156 valid responses, 50 from the Laos programme and 106 from the Myanmar one. This corresponds to a response rate of 72%.

CURRENT SITUATION OF RESPONDENTS

Total % | n=156



78%

FOUND JOBS
 RELATED TO THEIR
 FIELD OF STUDY

POSITIVE STUDENT OUTCOMES

82% of the respondents are employed and 6% are studying. A few (9%) are looking for jobs and a handful are not searching for any kind of opportunity. 78% of the respondents found jobs related to their fields of study.

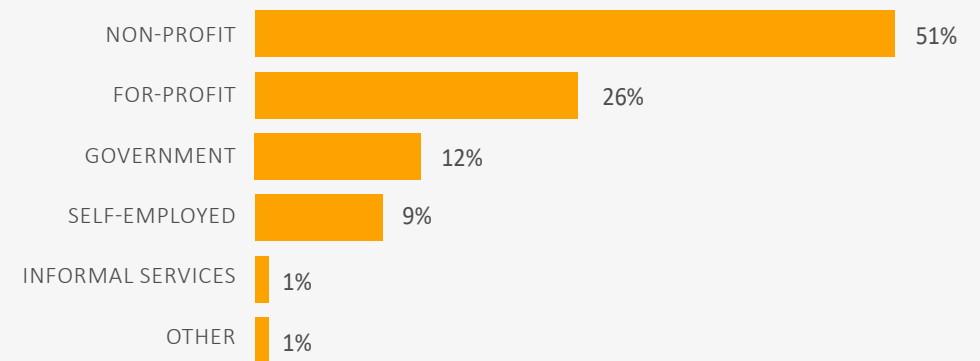
26%

OF THE MYANMAR RESPONDENTS ARE ENTREPRENEURS

Over a quarter of the Myanmar respondents are founders of either non-profit organisations, social enterprises, or for-profits organisations.

EMPLOYMENT BY SECTOR

Total % | n=128

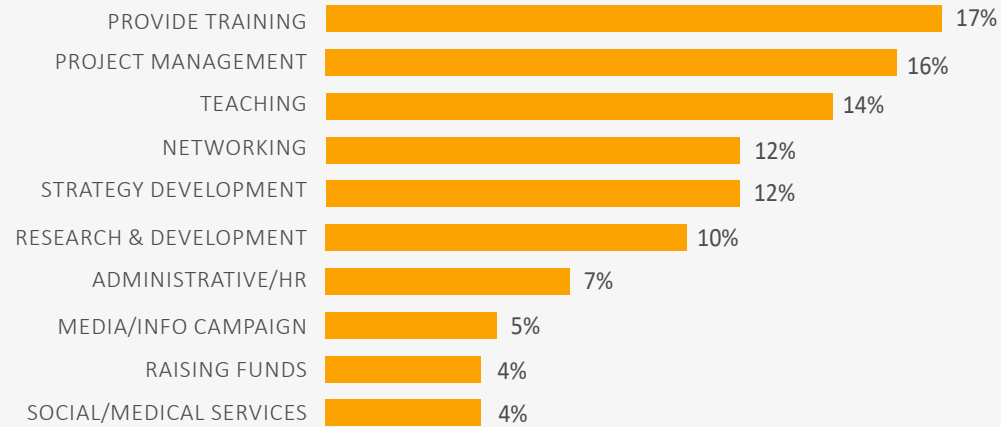


51% of the respondents are currently employed in the non-profit sector, 9% are self-employed and 12% are public servants. Only 26% are employed with for-profit organisations.



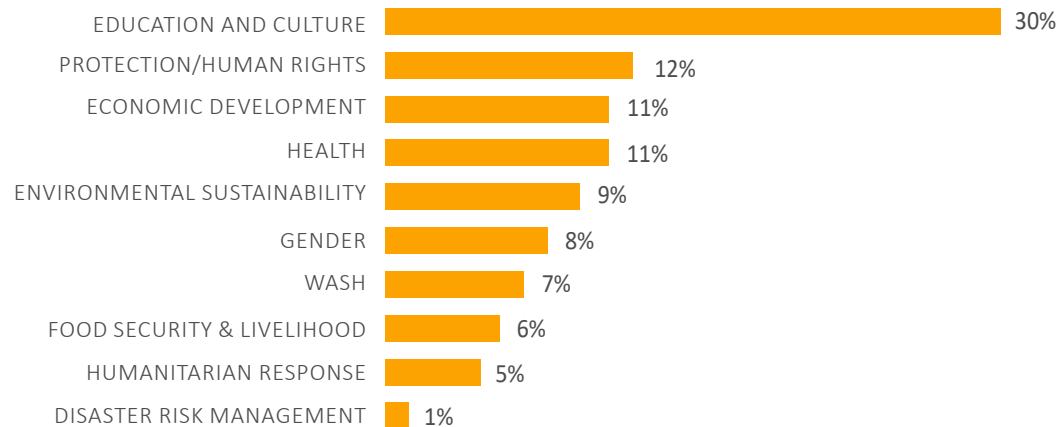
MAIN TASKS AT WORK

Multiple selection possible | top 10 shown | % within top 10



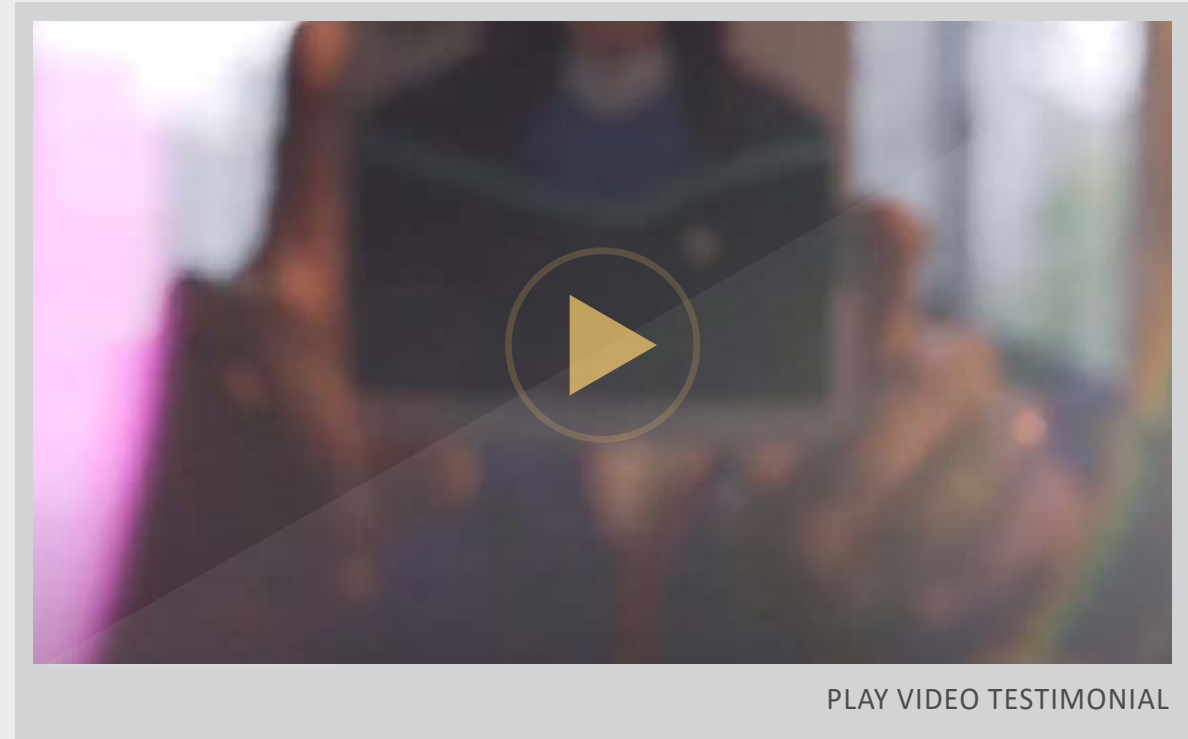
MAIN EMPLOYMENT FIELD

Multiple selection possible | top 10 shown | % within top 10



IMPACTFUL CAREERS

All alumni engaged in impactful careers were asked to answer further questions about their employment. Education and culture are the most frequently named fields of employment, followed by human rights and economic development. Providing training and teaching are among the most frequent tasks at work, together with project management.



MS. AYE AYE MON

CHILD'S DREAM UNIVERSITY SCHOLARSHIP
PROGRAMME ALUMNA & CO-FOUNDER,
GATEWAY LEARNING CENTER

“ Child’s Dream is like a second parent for me. Because if I did not get a scholarship, I would not have this level of education and I would still be working as a migrant worker. ”